

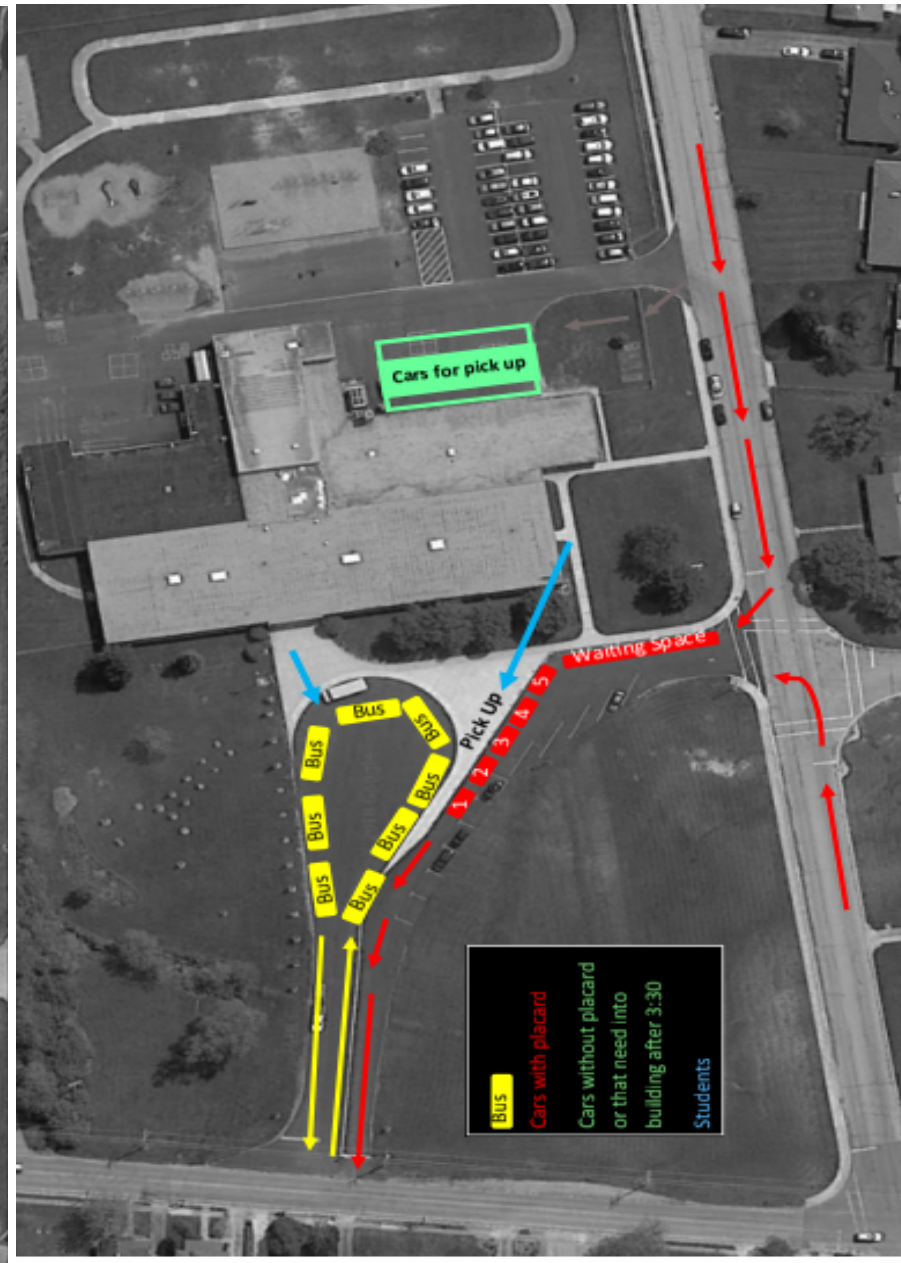
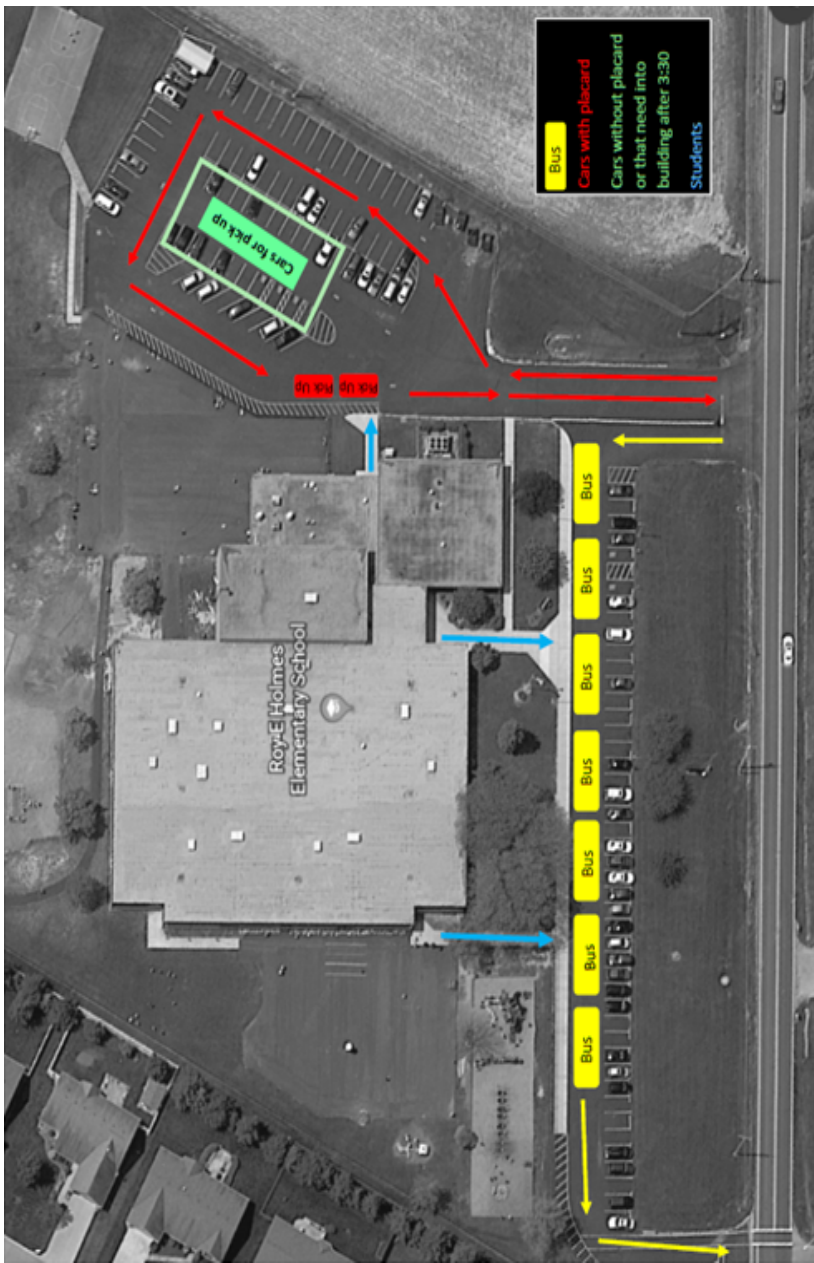
Operation Cooperation! Arrival and Dismissal Procedures: Grade Level Centers Operation Cooperation!

Why are we making this change? We want to ensure all students arrive and are dismissed safely and efficiently. Safety will be the main priority. With everyone's hard work and cooperation, arrival and dismissal will go smoothly in each Grade Level Center. Thank you in advance for your cooperation!

	I ride a bus to/from home.	I walk to the school I attend.	I walk to a neighborhood school and take a bus to/from my school.	I am dropped off. Beginning at 8:50 AM (Denver) Beginning at 9:00 AM (Holmes)
ARRIVAL (8:50 to 9:15) Arrive before 9:00 - report to the cafeteria to eat breakfast or join in an activity. After 9:00, report directly to class.	Students will get off the bus and enter a designated door	Students who walk to their school of attendance enter a designated door.	Walkers, whose bus stop is their neighborhood school, need to arrive no later than 8:35 am. Wait at the bus stop area assigned at each school.	The safest way to drop children off in the morning is in the car lane. Please stay in the right lane along designated area. Do not pass cars dropping off students.
Designated area in each Grade Level Center.	Holmes (K-2) Front Main Entrance Denver (3-5) Front Right Door	Front Main Entrance Right Front Door	Front Main Entrance Right Front Door- Lobby	Side door by the visitor parking lot Kiss & Drop Lane (Front of School)
DISMISSAL (3:30 to 4:00) All same day transportation changes <u>MUST</u> be made prior to 2:30 pm or the parent must make alternative dismissal arrangements.	Bus riders will be dismissed in three waves at 3:30, 3:40, and 3:50.	Walkers will wait together and be released from a designated door after both car and bus traffic have cleared. Holmes - Walkers come and go through the front doors Denver - Walkers released at 3:45PM	Walkers who walk home after arriving from the school of their attendance will meet a supervising adult and wait. Walkers will wait together and be released from a designated door after both car and bus traffic have cleared.	Families remain in the car and students will be dismissed to the designated pick up spot. Students will be matched with their pick up person using the matching placard. (See Placard Below)
Designated area in each Grade Level Center.	Holmes (K-2) Front Main Entrance Denver (3-5) Front Right Door	Front Playground Door Front Art Door	Front Playground Door Front Art Door	Side door by the visitor parking lot Kiss & Drop Lane(Front of School)

Placard

- The safest way to pick up your child at the end of the day is in the pick up lane. Please do not walk up to pick up children at dismissal.
- **Holmes** - If you need to walk up with a placard for pick up (instead of driving through), please park in the side lot and take your placard to the back door of the gym to pick-up.
- Display your placard in the front windshield (**Passenger side @ Holmes**, **Passenger side @ Denver**) of the vehicle and stop at the designated area until the student is released from adult.
- In order to keep traffic flowing smoothly, please remain in your vehicle while in the pick up lane.
- If you need to come inside the building or do not have a placard, please park in the designated area to come in to pick up your students.
- Cars will need to wait and follow traffic. Do not pull around waiting cars while students are loading.



Holmes

Denver

Legend

Bus	Cars without placard or that need into building after 3:30
Cars with Placards	Students

Legend

Bus	Cars without placard or that need into building after 3:30
Cars with Placards	Students